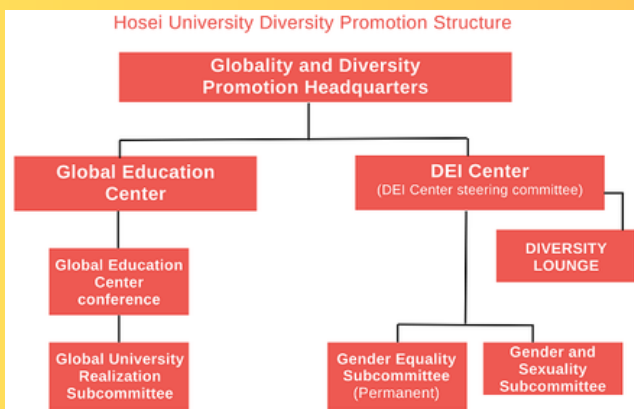


To realize a university management that values diversity, in accordance with the Hosei University Charter and the Statement on Diversity, Hosei University established the Diversity, Equity & Inclusion Center (DEI Center).

The DEI Center plays a central role in promoting diversity at the university, removing obstacles members with diverse backgrounds face in studying or performing their duties, and creating an inclusive environment so that our university can be a safe and creative place to learn, work, and develop their individuality.

Furthermore, our university has established the Globality and Diversity Promotion Headquarters, headed by the President. Through the establishment of a comprehensive and integrated system to promote globality and diversity, we are working towards achieving both the realization of a global university and the diversification of the university, advancing initiatives university-wide.



Hosei University Statement on Diversity

Achieving diversity means recognizing the wide range of values within our society and respecting the differing values embraced by free citizens as integral to their individuality.

Respect for human rights is the first step. Eliminating discrimination on the basis of gender, age, nationality, race, ethnicity, culture, religion, disability, or sexual orientation /gender identity is essential, but it is not sufficient. Diversity also means respecting such differences as integral to human individuality. Further, it means welcoming such differences and listening carefully to one another so as to gain a deeper understanding of each other's perspectives, lifestyles, feelings, and ideas. It is the creation of a society where no minority group need fear discrimination or exclusion, where each unique citizen is guaranteed the opportunity to pursue their own dreams of happiness, and everyone can live a full and rewarding life.

Given its integral role in society, the university has a duty to promote diversity, both as an educational institution responsible for grooming a new generation of creative and innovative citizens and as a research institution called on to seek solutions to society's myriad problems. The university's role is to contribute to the development of a society where citizens with diverse values live side by side, helping one another realize their individual dreams of happiness. To perform this role, the university must be a place where students, teachers, and researchers from all backgrounds feel free to pursue their studies and careers creatively and develop their own individual potential.

Steeped in the spirit of "freedom and progress", Hosei University has made a social commitment to build "practical wisdom for freedom." Freedom is not a privilege limited to certain groups of people but a right guaranteed to every member of society. Building on a foundation of respect for human rights, accommodation of diversity, and equal opportunity, Hosei University will actively welcome students and faculty members of all nationalities and cultural backgrounds and raise the quality of our education and research with the aim of extending "practical wisdom for freedom" to people around the world.

Hosei University will work actively to achieve true diversity.

Hosei University Diversity, Equity & Inclusion Center (DEI Center)

☎ 03-3264-5529

✉ dei@ml.hosei.ac.jp

1st Floor Fujimi Gate Ichigaya Campus,
Hosei University
2-17-1 Fujimi, Chiyoda-ku,
Tokyo 102-8160

<https://www.hosei.ac.jp/diversity/>



Diversity, Equity & Inclusion Center (DEI Center)





1st Floor Fujimi Gate
Ichigaya Campus
DEI Center

FACILITIES

◇ DIVERSITY LOUNGE

The DEI Center houses the Diversity Lounge, which serves as a hub for information dissemination and interaction, fostering respect for and greater understanding of differences in matters related to gender and sexuality, such as gender identity and sexual orientation, as well as in nationality, roots, race, culture, disability, etc.

Books on topics related to diversity are available for reading and borrowing. The center also has a resident coordinator to provide support, creating a safe and welcoming environment for diverse students and visitors.



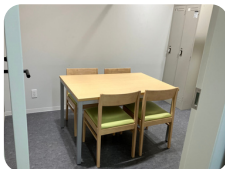
There is a discussion zone, as well as a reading zone where one can spend time in a relaxing and calm atmosphere.



◇ Individual Consultation Space

Individual counseling on gender, gender identity, sexual orientation, etc. is available in a privacy-conscious environment.

When it is not occupied, the individual consultation space can be used as a prayer space.



ACTIVITIES

◇ Awareness-raising and Information Dissemination

Awareness-raising and Information Dissemination
We hold events and publish newsletters to raise diversity awareness among members in the Hosei community.

◇ Creating an Inclusive Environment

We are committed to removing barriers in the environment, procedures, etc., on campus.

◇ Operation of DIVERSITY LOUNGE, Individual Consultation

We operate a community space, DIVERSITY LOUNGE. We provide individual consultation on matters related to gender and sexual diversity by specialized coordinators.

◇ Promotion of Gender Equity

To create a gender-balanced learning environment and workplace, we are working to create an environment where all individuals can play an active role regardless of their gender/gender identity.

◇ Hub for Campus-side Collaboration

As a hub for DEI (Diversity, Equity, and Inclusion) advancement, we establish a university-wide system to collaborate with relevant departments and offices.

User Guide



◇ Opening Hours

Monday to Friday 9:00 – 17:00
(closed during lunch break
11:30 – 12:30)

◇ Location

1st Floor, Fujimi Gate,
Ichigaya Campus

◇ Who can use the DEI Center and Diversity Lounge?

- Current Hosei University undergraduate students, graduate students, students in the School of Correspondence Education
- Faculty and Administrative Staff
- Students and teachers of Hosei University affiliated schools

◇ Individual Consultation

- Consultation is available with a specialized coordinator regarding concerns or issues related to gender, gender identity, sexual orientation, gender and sexual diversity, available support, etc., (Face-to-face or online.)



Individual
consultation
application form

Diversity Guidelines for Students, Faculty, and Staff

Hosei University has drawn up the Hosei University Diversity Guidelines for Students, Faculty and Staff, which outlines the university's basic policies and specific measures concerning "gender & sexuality", "disabilities", "nationality, culture, religion, etc.". The guidelines are available in Japanese and English.



Please access the guidelines using this QR code!

